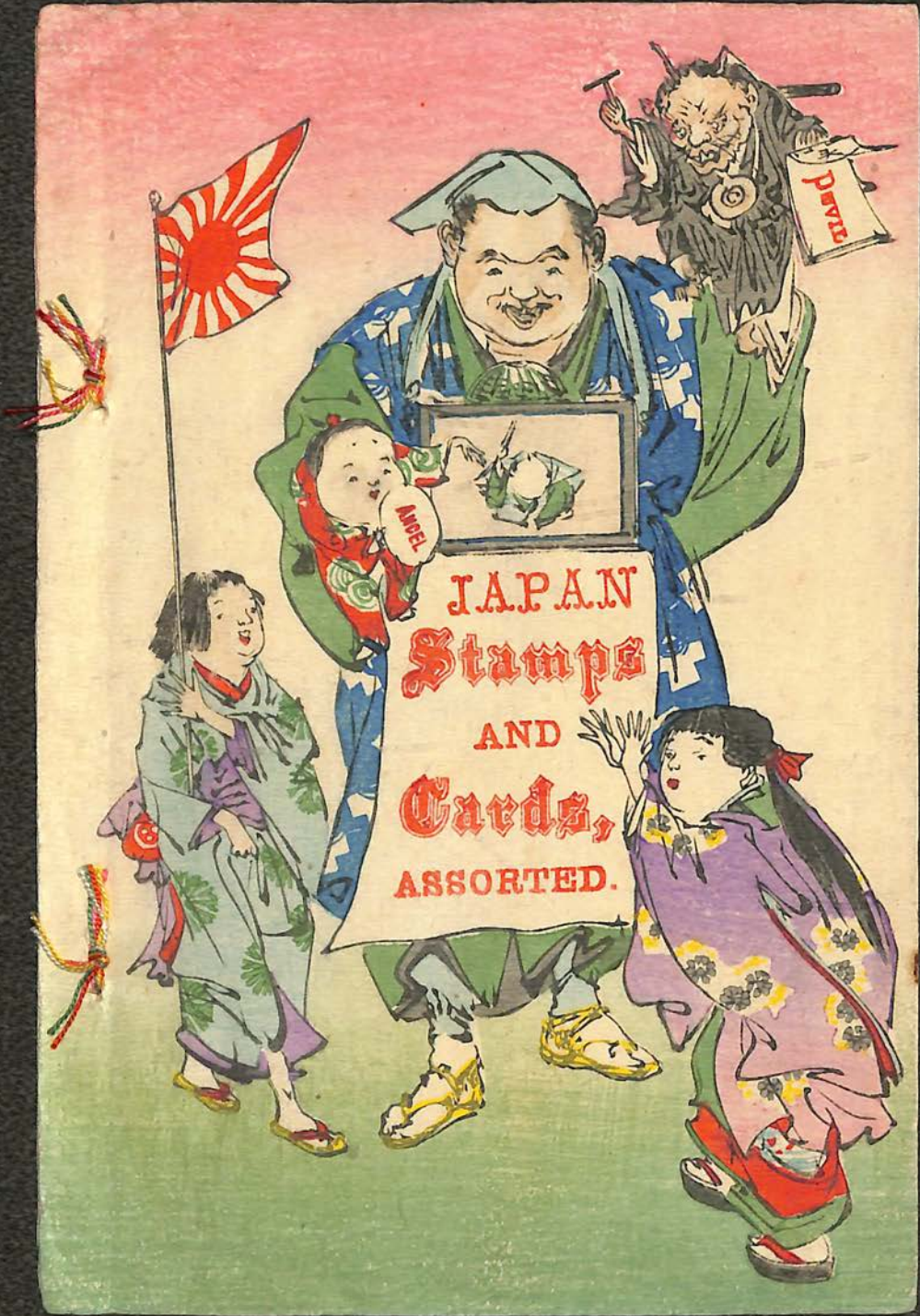


from Japan







JAPAN
Stamps
AND
Cards,
ASSORTED.

Passo

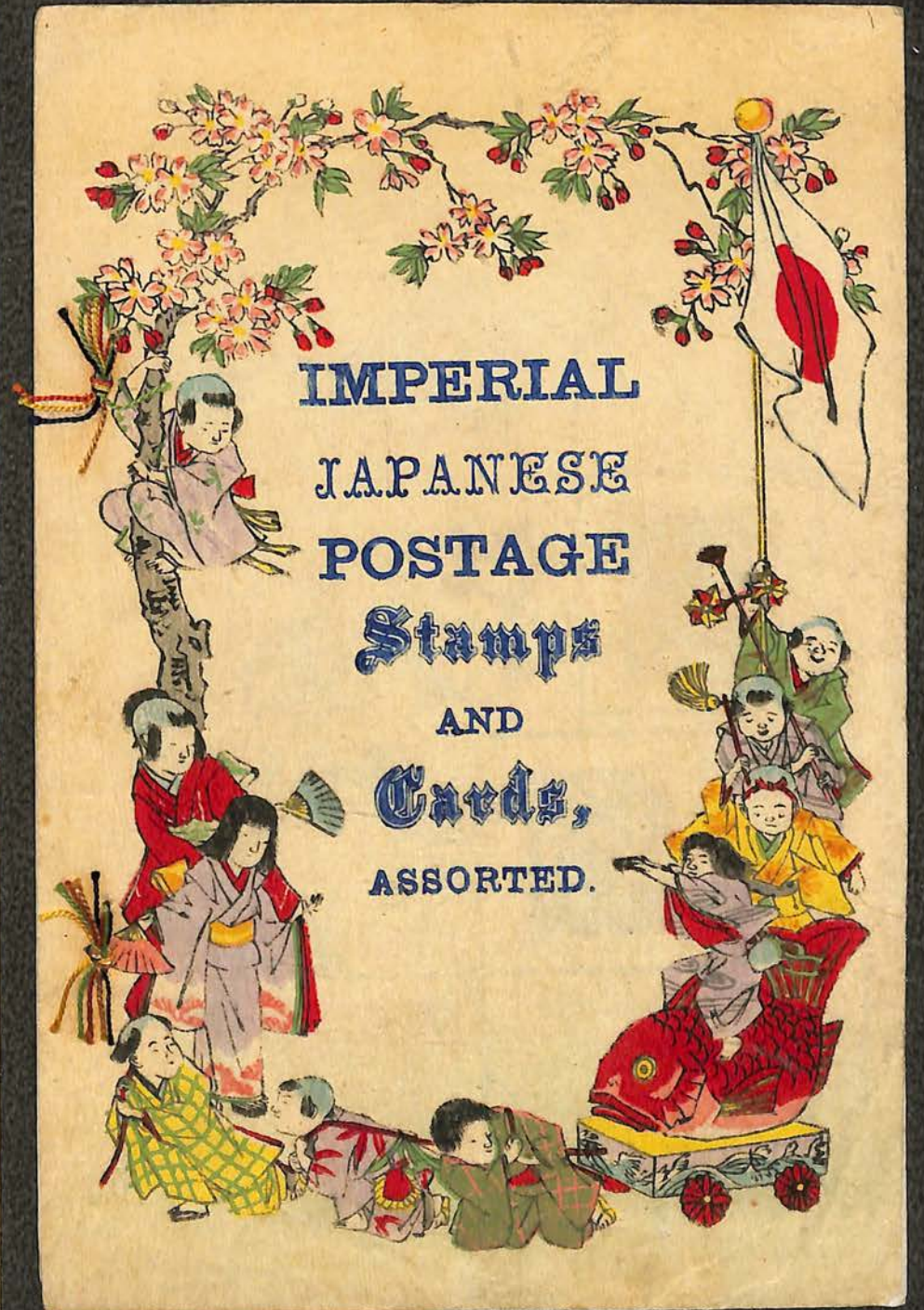
ANGEL



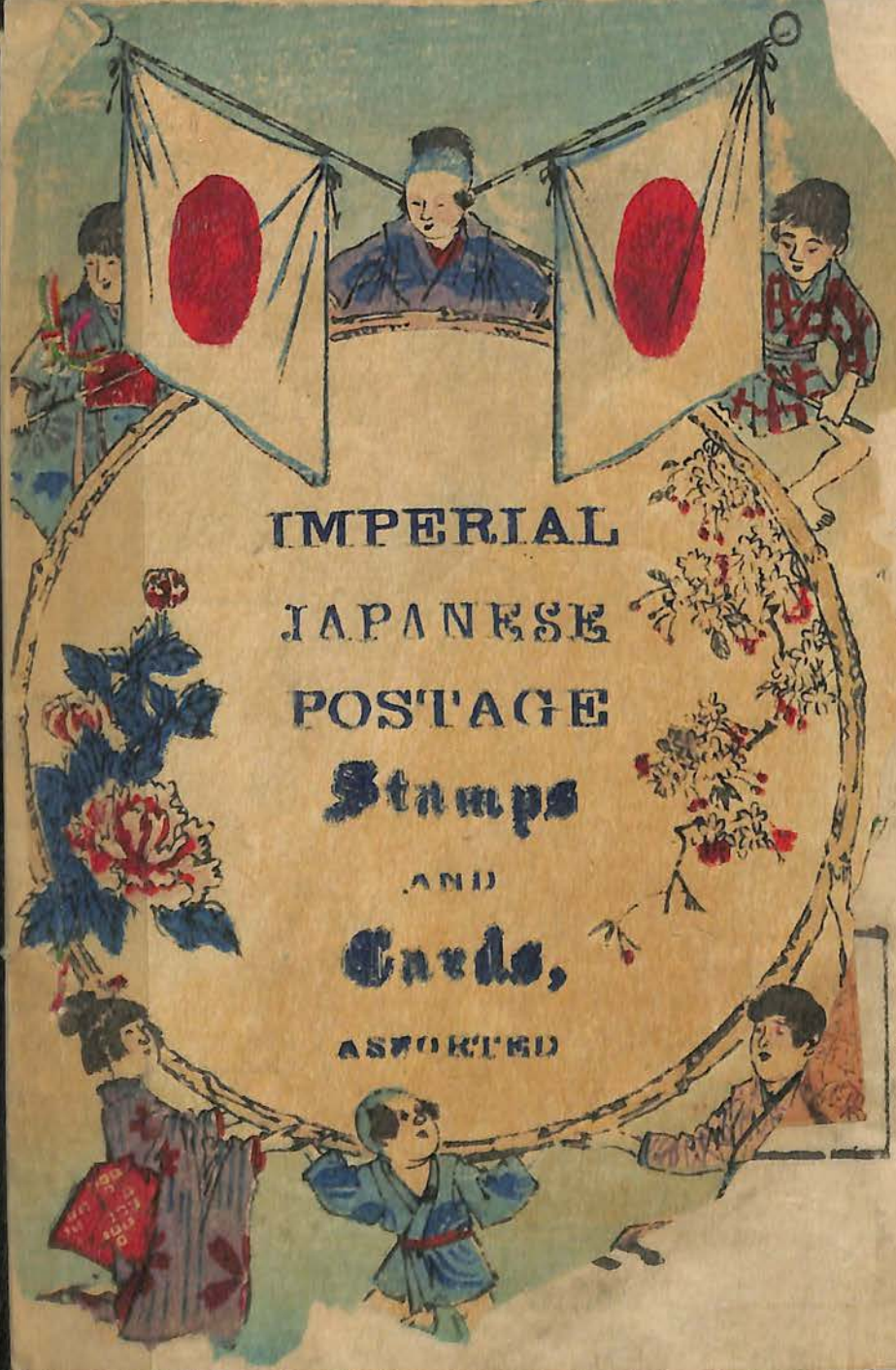
IMPERIAL
JAPANESE
POSTAGE
Stamps
AND
Cards,
ASSORTED.

TRADE
RUBIDGE
MARK

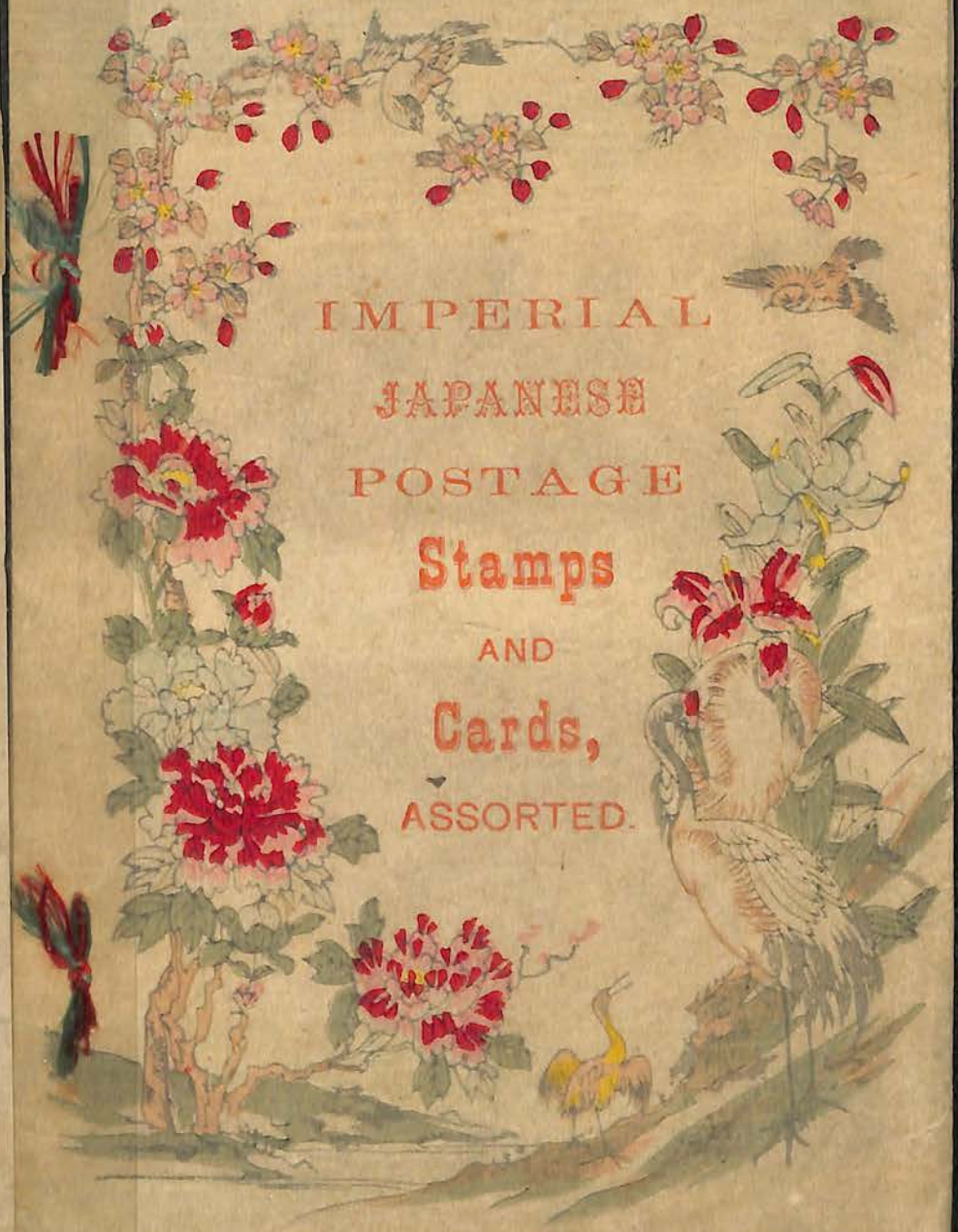




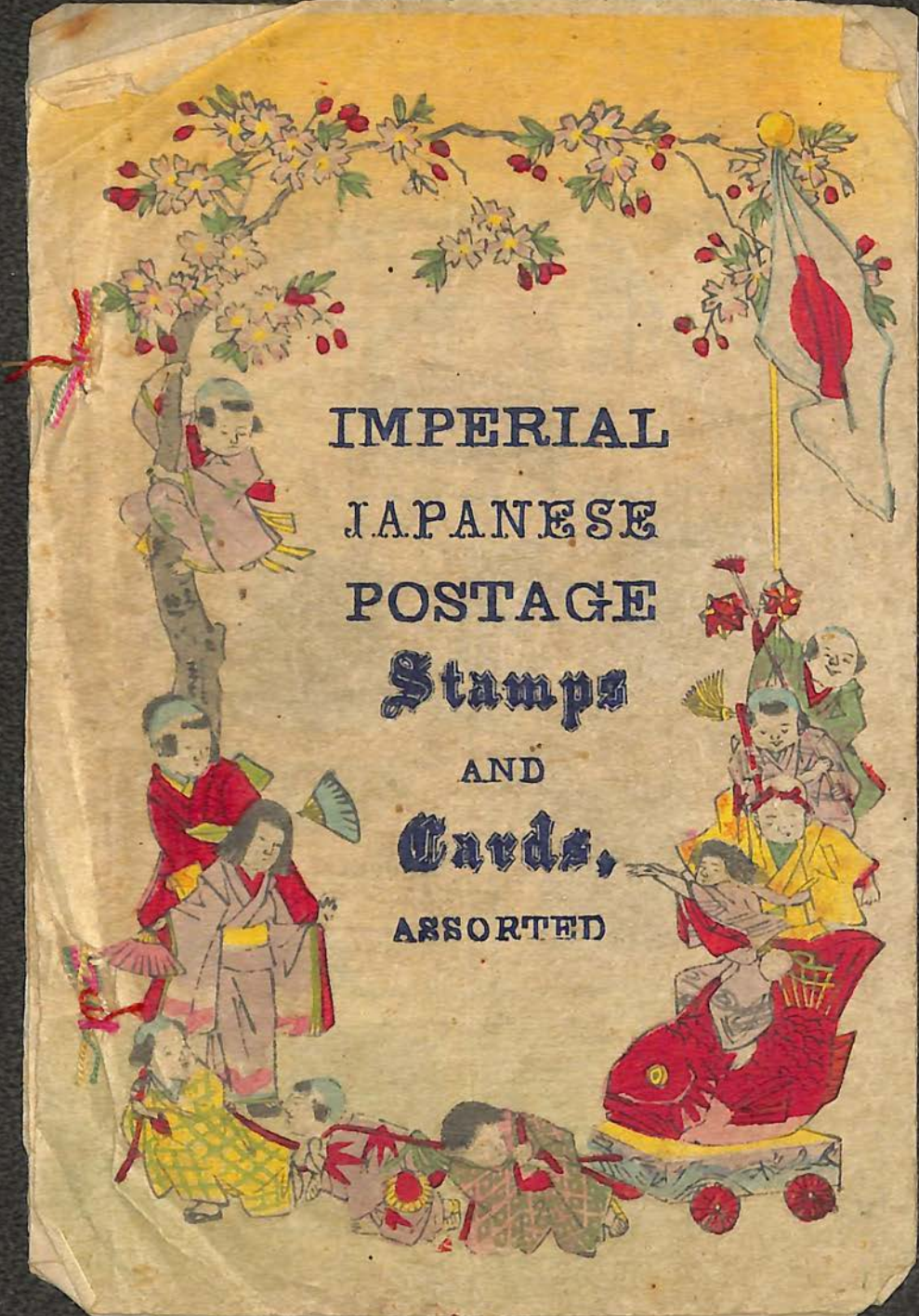
THE KISEN CO.
WHOLESALE & RETAIL
DIRECT IMPORTERS OF
JAPANESE ART GOODS
53 / 141 POST ST.
San Francisco, Cal.
Tel. Montgomery 670



IMPERIAL
JAPANESE
POSTAGE
Stamps
AND
Cards,
ASSORTED



IMPERIAL
JAPANESE
POSTAGE
Stamps
AND
Cards,
ASSORTED.




IMPERIAL
JAPANESE
POSTAGE
Stamps
AND
Cards,
ASSORTED



JAP




 神田王教 神保町
 於此地一書此日業
 武藏屋 柳
 有月廿九日
 此表面一宿可姓
 在定限リ提ビ入シ
 郵便はかき

50 (unclear)



JAPAN
OLD POSTAGE



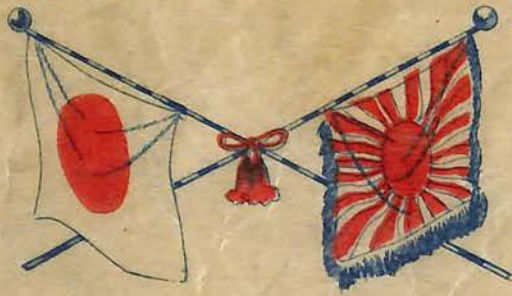
| | | | | |
|--|--|--|--|--|
| | | | | |
| | | | | |
| | | | | |
| | | | | |



JAPANESE
POSTAGE STAMPS

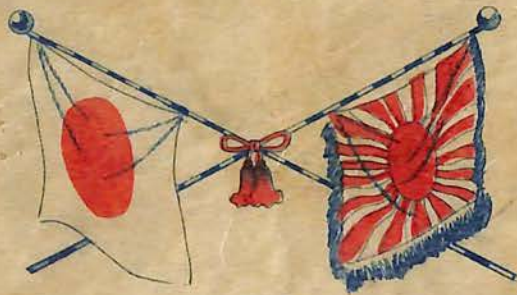
| | | | | |
|--|--|--|--|--|
| | | | | |
| | | | | |
| | | | | |
| | | | | |





THE
POSTAGE
OF JA





OLD
STAMPS
JAPAN

| | | | | |
|---|---|--|--|---|
|  |  |  |  |  |
|  |  |  |  |  |
|  |  |  | | |
|  |  |  | | |



JAPAN POSTAGE S



Handwritten text on a white rectangular label, possibly a name or address, partially obscured by the floral border.

郵便
 申
 村



No.



SE
TAMPS.

VALUE \$



DAI
B#
SEC

大阪府神戸
酒井治輔





JAPANESE



| | | | | |
|--|--|--|--|--|
| | | | | |
| | | | | |
| | | | | |
| | | | | |





E STAMPS.





JAPANESE



きかは便郵

神戶市
 之所
 中
 民
 恒
 再
 古
 阪

此の裏面には宿所姓名を限り



きかは

日本大
 郵便局
 15
 5
 10

掛
 賃



STAMPS.



東京廿三日
 法部省心標
 山崎了了
 下
 郵便二枚
 郵便二枚

便郵

神
 二
 日



#1061
275



JAPA
POSTAGE



| | | | | |
|--|--|--|--|--|
| | | | | |
| | | | | |
| | | | | |
| | | | | |



JAPANESE STAMPS.



| | | | | |
|--|--|--|--|--|
| | | | | |
| | | | | |
| | | | | |
| | | | | |





JAPANESE POSTAGE STAMPS.

| | | | | |
|--|--|--|--|--|
| | | | | |
| | | | | |
| | | | | |
| | | | | |





\$200
\$15.00?



143

人
去



20

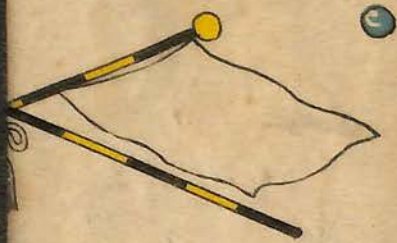


JAPA
POSTAGE



| | | | | |
|--|--|--|--|--|
| | | | | |
| | | | | |
| | | | | |
| | | | | |





CHINESE
STAMPS.





JAPA
POSTAGE



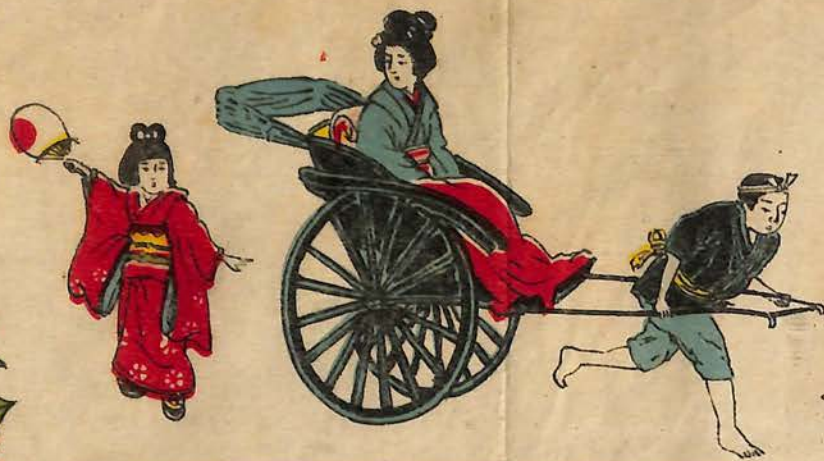
| | | | | |
|--|--|--|--|--|
| | | | | |
| | | | | |
| | | | | |
| | | | | |





NESE
STAMPS.





JAPAN
POSTAGE



| | | | | |
|--|--|--|--|--|
| | | | | |
| | | | | |
| | | | | |
| | | | | |



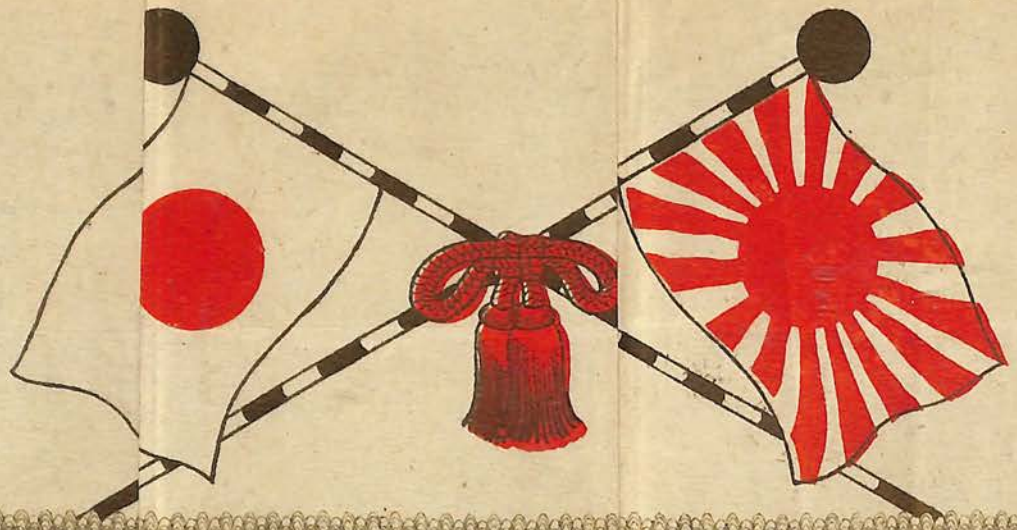


JAPANESE STAMPS.



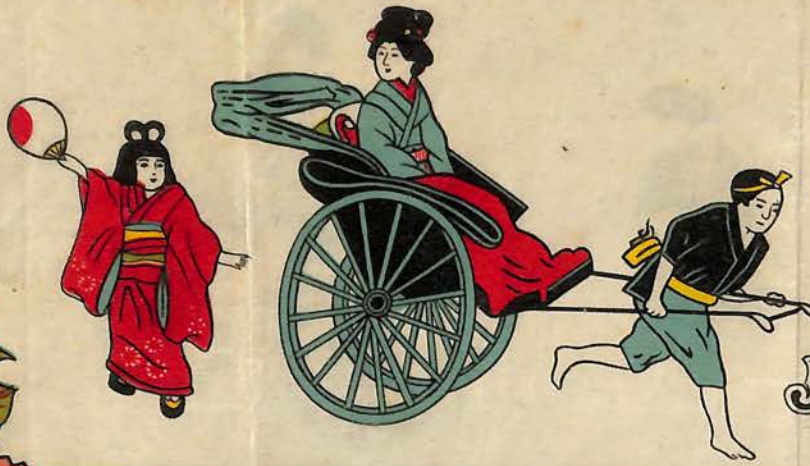
| | | | | |
|--|--|--|--|--|
| | | | | |
| | | | | |
| | | | | |
| | | | | |





IMPERIAL JAPANESE OLD POSTAGE STAMPS





JAPANESE



東尾柳路
市村の田舎
三つ





STAMPS.



| | | | | |
|--|--|---|--|--|
| | | | | |
| | | | | |
| | | 郵便便は 神 四 市 一 熊 次 山 | | |

郵便便
神
市
熊
山



JAPA
POSTAGE



| | | | | |
|--|--|--|--|--|
| | | | | |
| | | | | |
| | | | | |
| | | | | |





JAPANESE STAMPS.



204
A60!



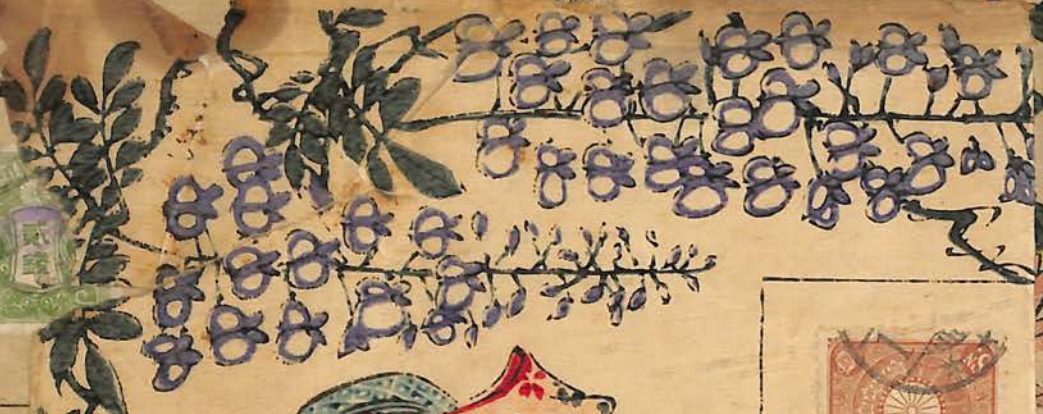
JAPAN
POSTAGE



| | | | | |
|---|--|---|---|---|
| |  |  |  |  |
|  |  |  |  |  |
|  | |  |  |  |
| | | | | |

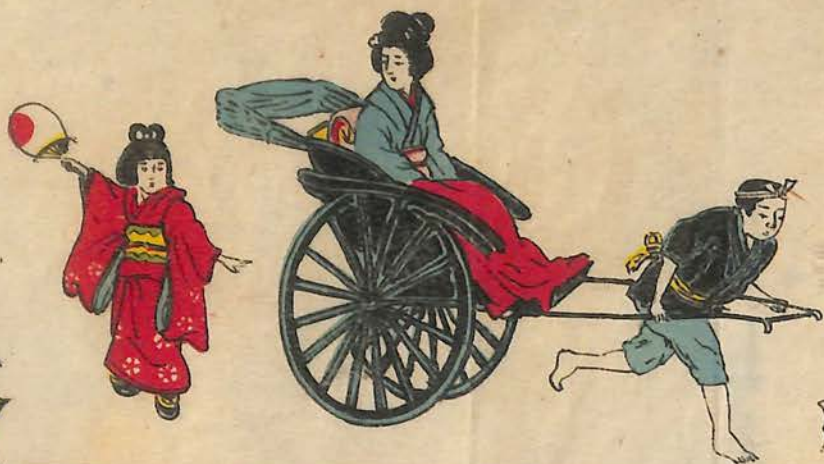


NESE
STAMP



OTION
OF
EPOSTAGE
MPS.





JAPA
POSTAGE



郵便便かき

東京区 浅草橋 三月

田中 庫一 様



電信略語カトウ或力
長堀倉庫専用
電話西二六四七番

大阪市西區
加藤



郵便便かき



NESE
STAMPS.



さかは便郵

神戶 神戶 神戶

羽前寒

七片

便郵

七ヨ

七ヨ

便郵

七ヨ

七ヨ

