

King Edward VII stamp.
with "China" overprint

(Circulated)



9 unc. stamps (1d, 2d, 4d(2), 6d, 8d, 20d
1 circ. (50d) 50d(2)

British Post Office
in China.

(Stamps ~~are~~ have been
hinged in the past)

2d and 4d(1) are
damaged at the top.



2c green cat #110
+ 1c red (U) #111
with overprint
"China"



#36 or (37) 4d - slate unc

Value: ~~1.25.00 (10)~~
\$28.00 ^{or} (15)

(Watermark)



#38 (with Wmk. 2)
(\$38.00)

#27 33 Violet Stamp Dues 1893

Queen Victoria

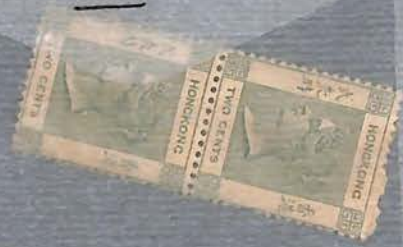
\$55.00



#37 (bl. of 2)

1882-1902

2 x 32.50 = \$65.00



37 (3)

1882-1902

3 x 32.50 = \$97.50



#37

1882-1902

3 x 32.50 = \$97.50



37(3) 1882-1902
 $3 \times 32.50 = \underline{\$97.50}$

(8)

37 1882-1902
 $4 \times 32.50 = \underline{\$130.00}$

(7)

37 1882-1902
 $3 \times 32.50 = \underline{\$97.50}$

(9)

37 2¢ green 1882-1902
 (261.00(2))
 $\$130.00?$

same quality?

(10)

39 (41. of 2) 4¢-Car. rose 1882-1902
 Queen Victoria
 Unc.
 (\$45.00)

(11)

37(1) (unc) Queen Victoria 1882-1902
 39(1)
 40(1)
 Value: $\underline{\$92.50}$

37-20 → \$27.50
 39-44 → \$20.00
 40-58 → \$45.00
 \$92.50

(11A)

66(1): \$575.00 Unc.
 66c(1): \$200.00 Cir.
 $\underline{\$775.00}$

(12)

88 (5 st) 2¢ deep green 1904-11
 (unc)
 $\underline{\$162.50}$

(13)

#90 King Edward VII 1904-11
 4d - violet red Carmine
 \$15.00 H.K.
 (Unc.)

 (14)

#133 (4) King Ed. VII 1912-14
 (4d-Carmine)
 \$26.00 H.K.
 (Unc.)

 (15)

#111 4d-Carmine 1912-14
 \$6.50
 (Unc.)

 (16)

#138 (2unc. stamps) 12c-violet/yellow
 112 (2unc. st.) 6c orange \$12.00
 #138-Ctr.
 Value: 12.00 +
 (15 (19.00) 20 (18.00) 21 (19.00) 22 (19.00) 23 (19.00) 24 (19.00) 25 (19.00) 26 (19.00) 27 (19.00) 28 (19.00) 29 (19.00) 30 (19.00) 31 (19.00) 32 (19.00) 33 (19.00) 34 (19.00) 35 (19.00) 36 (19.00) 37 (19.00) 38 (19.00) 39 (19.00) 40 (19.00) 41 (19.00) 42 (19.00) 43 (19.00) 44 (19.00) 45 (19.00) 46 (19.00) 47 (19.00) 48 (19.00) 49 (19.00) 50 (19.00) 51 (19.00) 52 (19.00) 53 (19.00) 54 (19.00) 55 (19.00) 56 (19.00) 57 (19.00) 58 (19.00) 59 (19.00) 60 (19.00) 61 (19.00) 62 (19.00) 63 (19.00) 64 (19.00) 65 (19.00) 66 (19.00) 67 (19.00) 68 (19.00) 69 (19.00) 70 (19.00) 71 (19.00) 72 (19.00) 73 (19.00) 74 (19.00) 75 (19.00) 76 (19.00) 77 (19.00) 78 (19.00) 79 (19.00) 80 (19.00) 81 (19.00) 82 (19.00) 83 (19.00) 84 (19.00) 85 (19.00) 86 (19.00) 87 (19.00) 88 (19.00) 89 (19.00) 90 (19.00) 91 (19.00) 92 (19.00) 93 (19.00) 94 (19.00) 95 (19.00) 96 (19.00) 97 (19.00) 98 (19.00) 99 (19.00) 100 (19.00) 101 (19.00) 102 (19.00) 103 (19.00) 104 (19.00) 105 (19.00) 106 (19.00) 107 (19.00) 108 (19.00) 109 (19.00) 110 (19.00) 111 (19.00) 112 (19.00) 113 (19.00) 114 (19.00) 115 (19.00) 116 (19.00) 117 (19.00) 118 (19.00) 119 (19.00) 120 (19.00) 121 (19.00) 122 (19.00) 123 (19.00) 124 (19.00) 125 (19.00) 126 (19.00) 127 (19.00) 128 (19.00) 129 (19.00) 130 (19.00) 131 (19.00) 132 (19.00) 133 (19.00) 134 (19.00) 135 (19.00) 136 (19.00) 137 (19.00) 138 (19.00) 139 (19.00) 140 (19.00) 141 (19.00) 142 (19.00) 143 (19.00) 144 (19.00) 145 (19.00) 146 (19.00) 147 (19.00) 148 (19.00) 149 (19.00) 150 (19.00) 151 (19.00) 152 (19.00) 153 (19.00) 154 (19.00) 155 (19.00) 156 (19.00) 157 (19.00) 158 (19.00) 159 (19.00) 160 (19.00) 161 (19.00) 162 (19.00) 163 (19.00) 164 (19.00) 165 (19.00) 166 (19.00) 167 (19.00) 168 (19.00) 169 (19.00) 170 (19.00) 171 (19.00) 172 (19.00) 173 (19.00) 174 (19.00) 175 (19.00) 176 (19.00) 177 (19.00) 178 (19.00) 179 (19.00) 180 (19.00) 181 (19.00) 182 (19.00) 183 (19.00) 184 (19.00) 185 (19.00) 186 (19.00) 187 (19.00) 188 (19.00) 189 (19.00) 190 (19.00) 191 (19.00) 192 (19.00) 193 (19.00) 194 (19.00) 195 (19.00) 196 (19.00) 197 (19.00) 198 (19.00) 199 (19.00) 200 (19.00)
 (Unc.)

 (17)

#140 25c - red violet & dl. violet 1921-37
 \$7.50
 (Unc.)

 (18)

147-150 Silver Jubilee 1935
 \$200.00

 (19)

Silver Jubilee Issue (Unc.) 1935
 Total: \$154.00
 147: 61.2 + 61.6 vertical : \$28.00
 148: 61.2 : \$18.00
 149: 61.6 vertical : \$108.00

 (20)

154(1): 0.75 (12-brown)
 155(1): 1.25 (20-gray)
 157(2): 2.20 (50-green)
 158: 6.4 + 6.2 + 6 = 12.6 + 4.2 = 16.8 (100-violet)
 1938-48

King George VI

UNC

57(10) (846.20)

160A(1): 2.25 (250-olive)
 161B(2): 7.00 (300-ultra)
 (9.25)

\$55.45



(22)

154... 163B 1938-52

Value: 132.10 + 6.60 + 11.25 + 4.50?
 + 3.85 + 4.50 + 5.60 =

\$168.40

Total: 4.50



(21)

154

1c Brown
 King George VI
 (Block of 10) = \$10.00

1938-52

~~27.50~~



(26)

158 (1) 10¢ - Violet (Unc.) 1938-48

\$3.50



(28)

162 Value: \$4.50 1938-48

#162



(29)

#164A (\$2 violet + red) King George VI 1938-48

\$25.00



(30)

#167 (2 Unc. + 3 Circ.) 1939
2 x 60.00 + 3 x 50.00 =

\$150.00



(31)

178 (bl. of 5) horiz. Silver Wedding 1948

\$17.50



(32)

157B bl. of 4 - 8d - brown-red 1928-48
King George VI

(unc.)

\$4.00



(27)

171 (bl. 3)

1941

\$12.00



(33)

18010 (unc) U.P.U. Issue. 1949

~~\$84.75~~
\$76.25



(35)

180-183 (4st) U.P.U. Issue 1949

\$72.25



(36)

183 (unc) U.P.U. 1949

\$35.00



(37)

#171: 1st-rod. (2st) $\Rightarrow 2 \times 4.00 = 8.00$ (1941)
#174: 30c-rod (2bl of 2) $\Rightarrow 4 \times 4.00 = 16.00$ (1946)
#175: 4c-brown (block of 2+1st) $\Rightarrow 3 \times 6.25 = 18.75$

Value: 42.75



171: bl. 2-horiz.
174: 20c-vert.
175: bl. 2-vert. + 1st.

(34)

#180: 10c 1.10ct

(~54.25/ea) (6 st.)_s

U.P.U

1949

Value: 625.50



Whitcomb & Tomes Limited, (Incorporated in Hong Kong)
2, Market Street, HONG KONG

(38)

(2 bl. 2 + 2 st)

(bl. 6 + bl. 5)

#184 (11 st.) (bl. of 6) + bl. of 5

1953

Value: \$77.00



(40)

1953

#184 - 10c - purple
Value \$7.00 each

(bl. 8 + bl. 6)

#184 (bl. of 8 + bl. of 6) = 14 st.
(14 x 7.00)

1953

Value: \$98.00



(41)

#184

185

5¢ Orange
Queen Eliz. II
(Block of 6)

1954-60

\$10.50



(42)

186 (3st)

10¢. Violet

1954-60

\$7.50

1st 3 = 1 + 2 + 0.19



(43)

188 (unc.)

1954-60

\$6.00



(44)

190 (unc.)

1954-60

\$5.00



(45)

191 (Circ.)

1954-60

\$6.00



(46)

#199 (d.o.t.)

Value: \$32.00

1961



IBIBIBIBIB

(47)

200 (#)

201 (#)

202(5)

1st Post. stamps of
H.K. cont.

1962

2.60 + 14.00 + 22.50 =

\$39.10



(49)

HONG KONG
postage stamp
centenary

1862-
1962



HONG KONG
postage stamp
centenary

1862-
1962



HONG KONG
postage stamp
centenary

1862-
1962



HONG KONG
postage stamp
centenary

1862-
1962



203-212 Queen Eliz. II 1962
 (2 sets) - Unc.
 (+ extra 21) (57.3x2) + 18.50
 \$/33.10

(51)

Queen Elizabeth II 1962
 # 203... 212

Value: 21.80 + 0.40 = 22.20
 \$0.80

212 (Circ.) + postpaid
 All others (Unc.)

(52)

203a: 3x4.00 = 12.00
 204a: 2x7.50 = 15.00
 206a: 2x19.00 = 38.00
 20a: 25.00

Queen 1962
 ELIZ II

(Unc.)

HONG KONG
 \$5
 12 at 5 cents
 8 at 10 cents
 6 at 20 cents
 4 at 50 cents

\$80.00

(53)

203a: 2x3.00 = 6.00
 204a: 4x6.50 = 26.00

Queen Eliz. II 1962

(Unc.)

HONG KONG STAMPS
 \$2
 8 at 5 cents
 16 at 10 cents

\$32.00

(54)

204 (bl. of 20): \$30.00 (10¢-purple)
 206 (bl. of 10): \$25.00 (20¢-brown)
 212 (bl. of 9): \$71.00 (10¢-brown)

Queen Elizabeth II 1962

Value: \$226.00

B 021719

(55)

#213 (2 bl. of 4)

or

~~213~~ (watermark)

~~245.00~~

\$24.00

or ~~44.00~~

1962

One might be 213, other
42 20 + 44 = \$66.00



(56)

214 (2): \$10.50

Eliz. II

1962

215 (1): 13.00

Value: \$23.50

214 - is the \$2 stamp
215 - is the \$5 stamp



58

214

1962

12/01/37 6.00 + 2.00 + 2.00 = 56.00

\$56.00



(59)



219 (bl. of 9 + bl. of 6) = 15st
 220 (bl. of 6) = 12st

Red Cross

1963

Have brown spots - on gum.
 Value? (maybe nil)

2.50 \$37.50
 $15 \times 2.50 = 37.50$
 $12 \times 35.00 = 420.00$
~~457.50~~
 427.00

Value if
 Excellent condition
 these are not
 in great cond.

Gum will spotted...



(64)

229. (bl. of 5 horiz. + 1)

Red Cross

1963

9/5.00
~~\$270.00~~



(65)

220

Red Cross. 81.30 (per Value)

1963

(bl. of 9) + 2st. unc
 + 1c.irc.

$357.5 + 3.50 = 361.00$
~~\$392.50 (circ.)~~
~~\$720.00~~



(66)

223
224

Int. Coop. Year Issue

1965

223: bl of 4 + 2 = 6 unc. + 16 inc
224: 1 st. unc.

$821.35 + 22.50 = 843.85$



(67)

223
(3.50 ea)

Int. Coop. Year

1965

$844.00 \uparrow$



(68)

225 (1) - unc. Churchill Memorial Issue
226 (bl. 4) - unc.

1966

Value: $\$15.75$

225 - is 10d stamp
226 - " 50d stamp.



(70)

#229 (2) - unc

#230 (1) - uac.

H-K.

W.H.O. Headquarter Issue 1966

Value: 4.50 + 9.00 = 13.50



(71)

231 (16st) unc. → 64.00

232 (9st) unc. → 180.00

Unesco

1966



\$2.44.00

HARRISON AND SONS LTD LONDON

231. bl. of 3 + bl. of 4 + bl. of 9 = 16 st.
232. bl. of 9 = 9 st.

(73)

233 (bl. of 4)

UNESCO Anniv. Issue

1966



210.00
~~210.00~~

(74)

234
(2.50ea)

Rams

1967

(8/10/19)



\$20.00

(75)

235(2) Three Rams 1967
(unc)



\$30.00 x 2 = 60.00

(76)

236 (6/14)
unc
H-K

SEACOM

1967

Value: \$68.00



(77)

#237 (61 of 90) = 104

Monkeys

1968



239, 241, 244

Seacraft

1968

Value: \$60.75

H. K.



241 (bl.3)

Seacraft

1968

\$33.00



80

245 (bl.3) - Unc. Bauhinia 1968
 246 (2bl.3 + bl.2+1) - Unc. Blakeana

H.K

25.50
 76.50
102.00



(81)

247 (3) - Unc. Intl. Human Rights Year 1968

Total 3.75

(bl.2+1) = 3 stamps.



(82)
 (83)
 +
 (84)

247 - Intl. Human Rights Year 1968
 248

\$26.25

247 (2.25x10) → 6.75
 248 (6.50x10) → 64.95



(85)

245 (261.2) - Baahinta - 1965
 246 (61.2) - Coat of Arms
 [44.00 + 22.00] = 66.00



249: (61.8 + 61.3 + 61.2 + 1) = 142 stamps 112.00
 250 (61.0 of 2) = 140.00
 Cock



251 (61.4 + 1) Chinese University Seal
 UNC. 1969

Value: 32.50



#254 (bl.2)-unc.

1970

(H.K.)

Lunar New Year: Dog



Value: \$120.00

(90)

254 (bl. of 10). Circulated

Lunar New Year: Dog

Jan. 1970



Value: ~~\$120.00~~ ^{85.00}

(91)

260-261 (bl. of 8 + bl. of 3)

Jan. 1971

$11 \times 46.00 = 506.00 + 5.00$
(Unc.) (Circ.)

Value
\$11.00

Boar



(92)

M 11445

#268 (61.4)
269 (61.2)

Lunar New Year Post

1972

H.K.

Value \$78.00



(93)

#270 (Unc.)

Cross Harbor
Tunnel Entrance
(H.K.) \$7.50

1972



#270

(94)

#291

H.K.

1973

2 bl. of 4 (Unc.)



#291

(95)

These opera masks, together with their English and Chinese inscription, symbolise the Hong Kong Arts Festival's intention to present, through the media of the arts, a blend of Oriental and Occidental culture that is characteristic of Hong Kong's unique position in Asia. The Arts Festival is a four-week annual event.

京劇臉譜及其中之英文解說，表明藝術節的宗旨，是通過藝術的途徑，介紹在亞洲具有特色的、香港的東西交萃的文化。藝術節是一年一度為期四週的活動

Design - Robert Hookham



Hong Kong Arts Festival
香港藝術節

309-11 (61.4)

Birds

Oct. 1975

(H.K.)

Value: \$116.00



55645

(97)

330-32 (61.0/6)

Opening of New G-PD building.

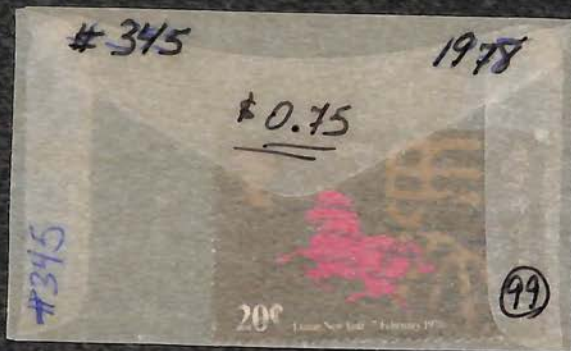
Aug. 1976

6 x 11.90 = 87.40



HARRIS

(88)



36 b (1) - Unc
39 (2) - Unc.

Queen Victoria
Type of 1862
(Watermark #2)

1882-1902

Value: \$90.00



(104)

These stamps must be IDed. to find their value.

Contains 8 envelopes (A to H) of various stamps.

Stamps Duty, contract.

1/20 or 1/12.50



106

#73 or 90 (3) King Edward VII

1903 or 1904-11

(H.11)

Value: \$66 or \$54
(also include a block of 2 affixed on paper.)



(105)

To I.D.

H.K. Circulated Stamps
some must be I.D.
(some have value)

~~12(61.2) - 20~~ Circulated St. H.K.
76(1) - 100

80(4) - 500 → \$62.50

81(1) - 11 → \$22.00



King Edward VII

(A)

(B)

Contains 10 env. (A to J)

(1)

~~19(2)~~
26(1)

Queen Victoria
(#200)

~~1872-80~~
1871

27(1)

Value: \$67.50

Value: \$2.50. (equality?)



Totals =

(2)

~~4~~ (Circ.) 2c - rose
36b Queen Victoria
(2) - 20

1963-70

40(1) - 50

~~\$22.50 x 2~~



\$6.50

(3)

2c.
Queen Victoria

Special Postmarks

(8)

366 (3)
40 (3)
44 (1)

Queen Victoria 1882-1902
(special postmark)

(11)

#40 Block of 4: 5c. Ultram. 1882-1902
(Queen Victoria)
Value:

(15)

#44 (1)
Queen Victoria (10c)
10c. Ultr. Red 1882-1902
"Special Postmark"
Special Postmark

(21)
(17)

#58 (1)
63 Queen Victoria 1885-91
(Surcharge in black)
Value: ~~\$2.00~~ \$2.75

(22)

#62 (7)
#61 (3)
63 (2) Queen Victoria St. 1891
handstamped with Chinese characters.
\$6.25

61 (3) → \$37.50
62 (7) → \$35.00
63 (2) → \$42.00

(23)

74 or 91 Ultr. 5c. Orange or 1903
Gray green or 1904-11
(09.50) or (17.50/36.50) ea.

Value between:
14 x 6.50 = \$91.00
14 x 9.50 = \$133.00
14 x 17.50 = \$245.00

24 st. Includes
18 stamps have special
postmarks - handma

(27)

77 or 96 12 cent. Red Ultr. - gray gr. yellow
King Ed. VII

Value: \$7.25 or \$23.25

(30)

86 (Jung
(2 circ.)

2¢ Brown
King Edward VII

1904-11

\$9.00

~~11.00~~ \$11.00

1.00

\$1.00



(unc.)

1 circ. (?)

1 circ.

(32)

difficult to find \$2.00
presence of watermark
(assumed no wmk.)

King Edward VII

#81 or 103 (2) ⇒ \$1.00 face value.
(26.00) or (42.00)

#82 ⇒ \$350.00 } \$2.00 face value.
or
104 ⇒ \$160.00 } Which one?
or
121 ⇒ \$70.00 }
or
144 ⇒ \$7.50 }



(33)

(35)

92 (64+1)

6c. Red viol. & Orange 1904-11

16.04 + 1 ⇒ 5d.
5 x 8.75 = \$43.75



(37)

#90 (61.4) ⇒ \$1.60
92 (61.4) ⇒ \$33.00

King Edward VII

1904-11

Value: \$34.60

90.44c, 92 (64c)



(34)

#131: 2c. Gray (3) 1921-37

#132: 2 3c. Gray (blk of 4+5)
King ~~Edward VII~~

#131 (3 x 8.00) = 24.00

#132 (2 x 1.50) = 3.00

27.00

King George V



#147 (22 ct)

(Include 1 Unused.
21 Used.)

Silver Jubilee Issue

1935

63.00 + 3.50 = 66.50

1935



(53)

148 (5)

(Line)

Silver Jubilee Issue

1935

149 (4)

150 (4)

Value 66.50

148 (5): 5 x 3.50 = 17.50

149 (4): 4 x 4.00 = 16.00

150 (4): 4 x 8.25 = 33.00



(54)

151-153 (3)

Coronation Issue

1937

7 sets +

151(3) : 17.25

153(3) : 12.00

(blue 25c) $\$ 87.50 + 29.25$

Total: 116.75



(57)

154...164A

King George VI

1938-52

(4 sets) - not complete.

~~some are missing~~

(w 22 Lac. 14)

Value: 88.00 +



(62)

167 (51.4+2)

Hong Kong "Stamp Duty" - 50

1938

(circ.)

Value: 90.00



(64)

168-172.

Centenary of British Rule 1941

(24)
168 (468+6) → 124.50
(48)
169 (562+8) → 63.00
(54)
170 (462+4) → 4.20
171 (1) → 6.50 (25d)
172 (2) → 13.00 (25d)

Value: \$111.20



(110)

174-75 (2 sets) → 7.30
+ 2 (75) → 4.90

1946

Peace Issue

~~2.20~~
12.10



(119)

#178

Silver Wedding Issue

1948

(61.4 + 61.3 + 62.2 + 8)

\$25.50



(120)

110. (8 sets of 10st.)

U.P.U. Issue

1949

→ 80 + 1.00 = 81.00



110 U.P.U. 10c

(125)

→ 191 (261.2 + 8) - 200

U.P.U. Issue

1949.

→ 192 (261.2 + 8) - 200

190-183 (4)

190-193 (4)
(1000)

\$ 105.25

191 → 12 x 4.75 = 57.00
192 → 8 x 5.00 = 40.00
190-193 → 58.25

Total: 105.25



(126)

(126)

Coronation # 184 4 small Envel. → 7.00

1953

+ 4.65

+ 3.15

+ 7.00

~~27.80~~
\$ 27.85

61.6 + 66.19 + 261.2 + 41.3 + 2 = 392.29
0.35 L.A. → 13.65

184 Coronation Issued 1953

\$ 3.15



(133)

185-197 (12)

Elizabeth II

1954-60

195-196

185-197 (12)

\$21.40

(53)

(53)

199 (4.2+1)
(Gift)

Arms of University ~~1960~~
1961

\$6.00

(151)

200-202 (61.4)

1st Postage Stamp of
Hong Kong, centenary.

1962

Value: \$10.80



(155)

203-219 (15)

Queen Elizabeth II

1962

7 sets of 15 st.

$67 \times 36.50 = \underline{\underline{\$252.00}}$



158

219 (41.6+61.2+8)

Red Cross Centenary Issue

1963

220 (61.4+61.2)

$630 + 42.00 = \underline{\underline{\$48.50}}$



160

221 (46.6+76.4+46.2) ITU Issue

1965

222 (61.2+6)



221 → \$18.00
222 → 28.00
346.00

161

Int. Cooperation Year Issue

223: (2b1.6 + 5b1.4 + 6b1.2) = 41.0.35
224: (2b1.4 + 3b1.2 + b1.3 + 3) = 20.2.75

\$ 30.40



162

225-228 (16st)

Churchill Memorial Issue

1966

4 sets of 4 stamps # 225-28

4 x 11.40 = \$ 45.60

Circulated Stamps.



163

Churchill Issue.

1966

225: 2b1.6 + 4b1.4 + b1.2 = 30 x .25 = 7.50
226: b1.4 + b1.2 = 6 x .90 = 5.40
227: b1.2 = 2 x 3.25 = 6.50
228: b1.4 = 4 x 4.60 = 18.40

\$ 46.40



164

229 (61.8 + 361.6 + 61.3 + 2) - 10¢
 230 (261.4 + 261.3 + 261.3 + 4)

WHO Headquarters Issue

1966

31 x 0.30 = 9.30
 22 x 2.00 = 44.00
53.30



198

231 (561.6 + 461.4 + 561.2) - 10¢
 232 (261.4 + 661.3 + 61.2 + 7) - 50¢
 233 (8) - 82.00

Unesco Anniv. Issue

1966

Value: 167.00



205

234 - (10¢)
 235 - (61.30)

Lunar New Year: Ram

1967

Value: 82.80

234 (261.4 + 561.2) → \$102.90
 235 (8) → \$72.00



209

#236
[14.0+2.2]

(Seacom)

1967

\$12.00

422.15

#236



(211)

237 (361.6+61.4+861.2) - 10¢
237 (4) - 21.20

Lunar New Year: Monkey
(1968)

\$15.00

E 14519

#237 = 344.50 - 14.00
#238 = 44.00 - 628.00



(213)

239-44 (6)

Seacraft.

1968

9 complete sets of 6 stamps.

9 x 18.00 = \$145.80



(221)

239, 240, 241, 242, 244

Seacrafts

1961

Value: \$127.50

239 (2.61.2) → \$1.50
240 (4.61.9) → \$6.00
241 (2.61.4) → \$4.00

243 (6.61.9) → \$16.00
244 (2.61.9) → \$10.00
\$127.50



1961

222

247-248 (bl. of 4)

1968

Intl. Human Rights Year

\$10.00

~~\$7.35~~

\$2.50 x 4 = \$10.00



226

249 (2.61.2 + 2)

Lunar New Year: Rooster

1969

250 (2.61.2 + 6)

Value: \$104.00

249: 6 x \$9.50 = 9.00
250: 10 x \$9.50 = \$95.00



227

251
(bl. 2+3)

Chinese Univ. of H.K.

1969



\$18.00

229

252 (bl. of 2)

1969



\$12.00

230

253 (1)

254 (3bl. 2+9)

Lunar New Year: Dog

1970



231

257 (4)

258 (4)

4 x 0.30 = 1.20

4 x 1.75 = 7.00

58.20

Apr., 1970



Centenary of the Tung Wah Group

236
237
238

263 (61.2+3) - 50¢

60th. Anniv. of Boy Scouts

1971

264 (61.4+5) - 20¢

#262-64 (3) => 10.25

Total \$96.25

263 => 5 x \$1.00 = 5.00
264 => 9 x \$1.00 = 9.00



238

267 (61.3+2)

Festival of H.K.

1982

\$30.00



239

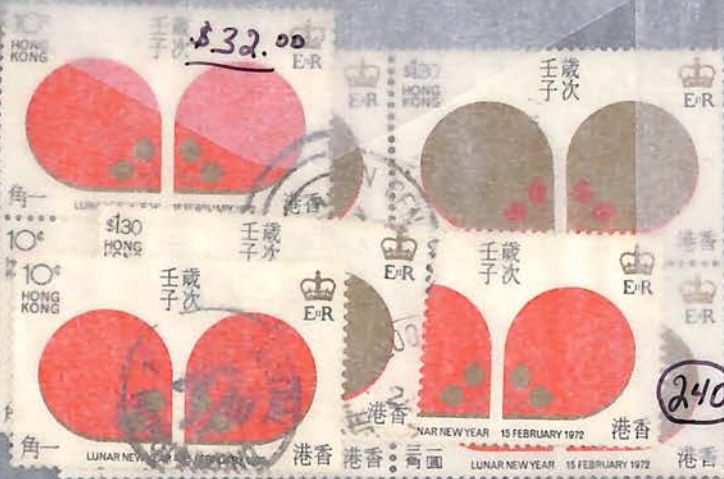
268 (61.3+1)

Lunar New Year: Rat

1972

269 (61.4+1)

\$32.00



240

2.00 + 30.00
(268) (269)

#273(1) Circ.

Luna New Year (O.K.)

1973

#274(1) "

(~~\$10.00~~)
\$75.25

#274-9 bl. of 4 + 3 bl. of 2 + 3 = 13 bl.



(24)
(25)

305 (6)

6 x 4.50 = \$27.00

1975



(26)

J1 to J5
(Circ.)

Scotts

1923

Value: \$119.85

Include:

J3 a 1 bl. of 2
J4 a + ~~b~~ + 1 bl. of 3 + 1

J1 (3 of 2), J2 (3 of 2), J3 (3 of 2),
J4 (4 of 2), J5 (1 of 1)



\$2.10 + \$33.00 + \$21.75 + \$54.00 + \$9.00
Total: \$119.85

(27)

Postage Due Stamps

Hong Kong
1938-47

56 (1), 57 (1, 2, 3), 59 (1, 6, 2, 5, 2),
510 (1, 2, 3), 511 (2), 512 (3)

Value: \$422.30



110.21 + 340 + 3.30 + 4.50 + 40.50
\$59,5400 each stamp. - 88

50 Cancellation Postmarks H.K.
(Variety)



HONG KONG
PRODUCTS

279

30 Cancellation Postmark + stamps H.K.



280
178

Brother of Guilherme.. Da Silva, in HK

Cover. (H.K.)

Jan. 17, 1942?

Passed Censor. (Cane. postmark)

Antonio J. da Silva
% General Electric Co. of China



Hong Kong
China

