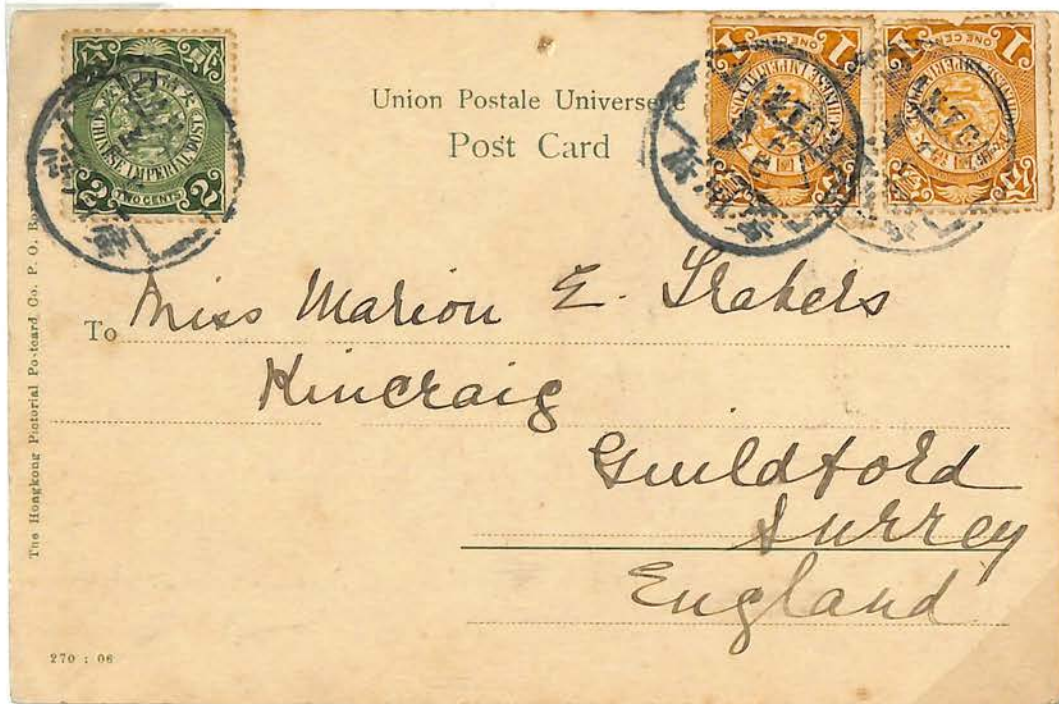


Canton to Scotland, 17 Nov 05, via French Post Office at Canton



Canton to England, lunar dater 13 June 1911

Picture post cards mailed at Canton going outside the country were paid at the 4 cent rate charged for international post cards from 2 Feb 1897 until 31 Dec 1921.

IMPERIAL POST OFFICE

CANTON

Foreign Mail

Imperial Post Office to French Post Office



Canton bisected circle with linked line handstamp struck in blue.  
4 cent International single postcard rate effective 2 Feb 1897 to 31 Dec 21

Canton to England, 4 May 1904. Unusual strike in blue ink at Canton P.O. then forwarded to French Post Office in Canton, 7 MAI 04, for placement aboard ship. French packet boat postmark 31 MAI 04.

IMPERIAL POST OFFICE

CANTON

Foreign Mail

International Letter



International letter rate 10 cents per half ounce  
effective from 2 Feb 1897 to 30 Sep 1907

Hwanghoi to Boston via Canton and Hong Kong, 15 Mar 1906, Hwanghoi to French Post Office at Canton then to Canton Head Office before going to Hong Kong to be placed aboard an outbound ship.

CANTON

IMPERIAL POST OFFICE

Hong Kong Letters - Special Rate

Foreign Mail



The special rate of 2 cents per half ounce for letters to Hong Kong was effective 8 April 1902 to 1 June 1931

Canton to Hong Kong, 9 Feb and 1 Mar 1910, paid at two cent rate for certain southern cities to Hong Kong and Macau. Both with Hong Kong cds receivers on back one rerouted to Canton with British Post Office at Canton receiver on back. Hong Kong, even though British controlled, was recognized as part of China.

IMPERIAL POST OFFICE

CANTON

Domestic Letter

First Weight Step Letter



Canton bisected circle with unlinked line handstamp struck in black.  
2 cents per quarter oz. domestic letter rate effective 24 Apr 1897 to 7 Apr 02

Canton to Kiautschou, 20 Sep 1901, the two cent red coiling dragon stamp paying the domestic first step rate.  
On the reverse is an oval KIAOCHOW SEP 28 1901 receiver and a Shanghai transit mark.

Domestic Drop Letter



Drop letter rate = one half cent per 1 ounce  
Rate effective 5 August 1912

Three examples of the elusive Canton drop letter rate All covers circa 1912-1913. Two of the above covers have Letter Box handstamps on the reverse, numbers 24 and 26..

IMPERIAL POST OFFICE

CANTON

Domestic Mail

Post Card



The domestic single postcard rate was one cent effective 2 Feb 1897 to 30 June 1917.

Canton to Shiu-Hing via Sam-Shui, 19 April 1907, shows a 1 cent Coiling Dragon stamp paying the domestic post card rate. Canton bi-lingual postmark cancels stamp and also shown are Samshui transit and all-Chinese dater of Shiu-Hing upon arrival same day as mailed.

CANTON



Canton, China, July 31, 1912  
 Here again! Everything  
 in China absorbing  
 interest just now. Great  
 strides being taken towards  
 Modernity. Am spending  
 a week here - but free  
 of business. Best wishes,  
 C. W. Eber,

Published by M. Sternberg, Wholesale and Retail Postcard Dealer  
 No. 51 Queen's Road Central, Hongkong



Westway

Rev. Edward W. Wallace,  
 Yinkhsien  
 West China



30 AUG 04

CHINA

A WORD FROM  
THE FAR EAST

PONASANG HOSPITAL REPORT  
H. N. KINNEAR, M. D., FOOSHOW, CHINA

*also*  
*Miss S. Barber.*

*Mrs. R. E. Barber,*  
*Joliet, Ill.,*  
*U. S. A.*



CANTON

Republic Post

Shameen - Canton

Special Rate to Hong Kong

W. D. SHELBY M. D.

生醫車

Shameen Canton,



This Caroline Chen,  
Wiglers Hotel,  
Wuddy Road,  
Hankow.

CANTON

Republic Post

17 March 1913

Letter Rate to Hong Kong

The normal rate was 4 cents however, letters were subject to a special reduced rate of 2 cents until 1 October 1917.

