



1250-1251 NH SET
ISSUED w/o gum _____ Price \$2.25/SET

1121-23 MINT
ISSUED w/o gum _____ Price \$14.50/SET



Item No. GK-102A



Item No. GK-102A

1070-2 NH (LIFE CRASE ON 1070A
(NO GUM AT ISSUED) (AS HING 200) 13.25 Price 7.40



Style No. GK 107BK

1118-20 NH
(NO GUM AT ISSUED) 13.50 Price 9.75



Style No. GK 107BK

1105-8 NH
 (100 GUM AS ISSUED) Price 8.00



Style No. GK 107BK

ROC
 1105-08 CV11- ECV 8-1
 ** * U XF ~~NE~~ F AVE S/S
 BLK CV PS FDC PPC SH

1955 CHENG
 CH'ENG-KUNG
 OVERPRINTS

LOT# 679



念紀年百行發票郵國中



日十二月三年七十六國民華中

行發局總政郵部通交

China 1355 * Price 25.00



Style No. GK 102a

China(r)



Item No. GK-102A

第二十二屆萬國郵政聯盟大會

發展現代化郵政
 滿足社會需要

江澤民
 一九九二年元月十二日

800分

CHINA
 中國郵政

TW 87 5.50



duplicate Taiwan cancels



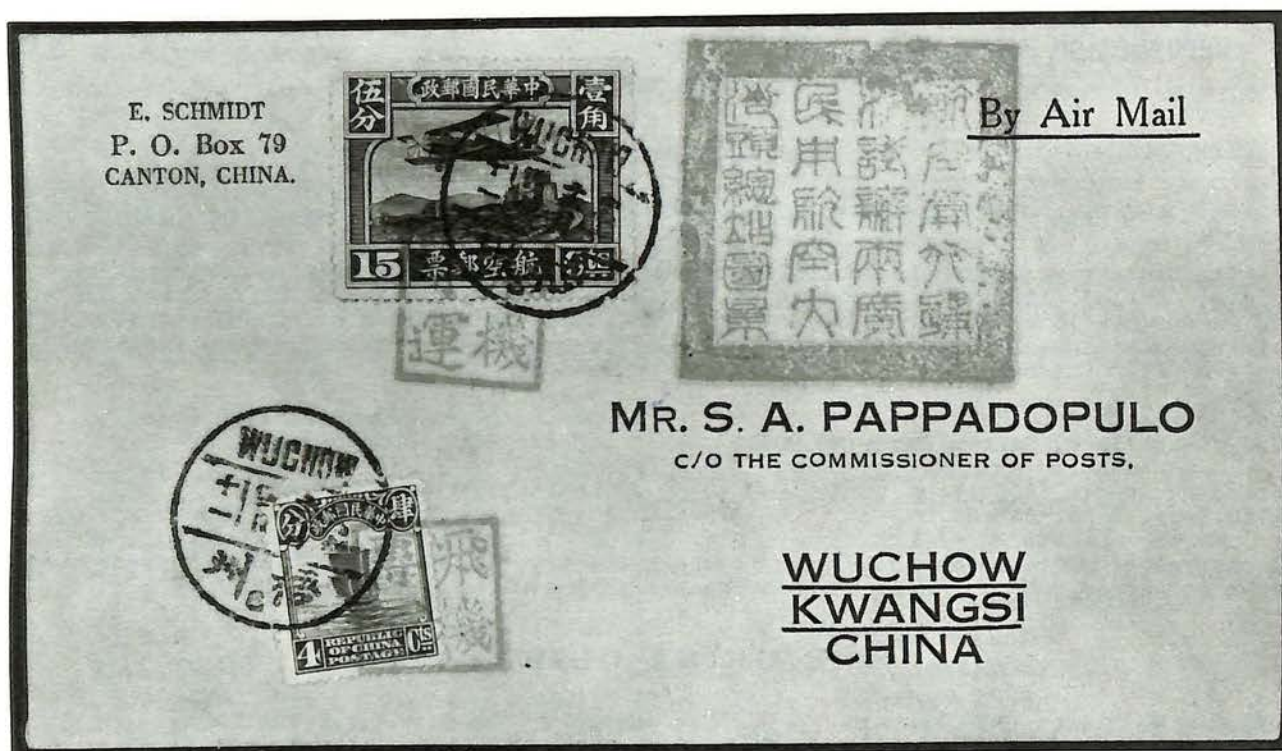


THE CHINA CLIPPER

VOLUME 39 NUMBER 4

WHOLE NUMBER 214

MAY 1975



A Canton - Wuchow Military Flight Cover, December 1930
(See page 126.)

CHINA



Changhwa



Changhwa



Chaochow



Chaochow



Chunan
-Agency-



Chunan



Chunan



Chunan



Chusan



Chungli



Chungpu



Chutung



Chushan
-Agency-



Chushan



Cheng



Chihshang



Checheng



Chutung

CHINA



Erhlin



Ershui



Erhlin Agency



Fengshan



Fengshan



Fengshan



Fenglin



Fenglin



Ilan



duplicate cancels

CHINA



Hengchun



Homei



Hukow



Howli



Howli-Agency



Hsintien



Hsia Kwei



Hwalien



Hsilo



Hwalien



Hukow Agency
Feng shan Chu



Hwei



Hwei



Ilkwan
?



Ilan



Suifang Agency

CHI



Keelung



top - Kinkutang Agency



Kangshan
- Agency -



Kangshan



Kinkwashi



Kial



Kihu



Kizi



Kwanshan



Kaohsiung



Keelung



Kichow



Kishan



Kukeng



Keelung



Keelung



Kichow



Kishan



Kukeng



Kwanmiao



Kwansi



Kishan



Kingmei



Kuchu

CHINA



LinKow or LingKow



Likang



Linpien



Linpien



Linyüan



Liukia



Liukia



Lotung



Lukang

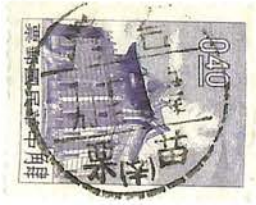
CHI



Matou



Meishan Agency



Miaoli



Miaoli



Miaoli



Mucha
- Agency -



Mucha
- English -



CHINA



Nanchang



Nanki
- Agency -



Nantow



Nanchow



Neihu



Neipu

CHINA



Penghu



Pei Kang



Pei Kang
- Agency -



Pei Kang



Peitow



Peitow



Peitow, S.



Pingtung



Pingtung



Peimen



Potze



Puchung
- Agency -



Puli
- Agency -



Puli
Green B's



Puli



Pan Kiao



Ping Tsing

CHINA



San Chung



Sanhsing



Sani



Shu



Shih lin



Silo



Sintien



Sinkang



Suao



Sinpu



Sinyang



Sinyang



Suehchia



Suao



Shalu

CHINA



Tahu



Taichung



Taichung



Taichung



Tacheng



Tainan



Taitung



Talin



Tashanli



Taimali



Tanshui



Tanshui



Tanshui



Tanshui



Tantze



Taoyuan



Taoyuan



Taoyuan



Taoyuan-Agency



Tienchung-Agency



CHINA



Towlin



Towlin



Tsiaoki



Towlin
-Agency-



Towlin
-Agency-



Tsiaoki



Tsingshui



Tunglo



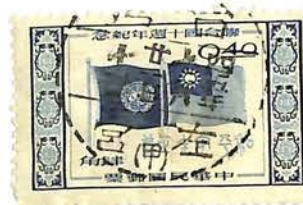
Tungshiao
-Agency-



Tungshih-N.



Tungshih



Tsoying



Tsi-Tsi

CHINA



Wujin



CHINA



Yangmei



Yangmei



Yuanli



Yuanlin



Yuanlin



Yütsing



Yangmingshan



Yangmingshan



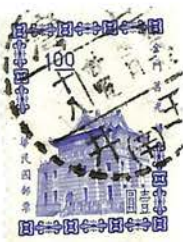
Yingko



Yali



Yütsing Agency



Yütsing



Yungtsing

CHINA



Quemoy



Kinmen, Quemoy
Bi-lingual



*P. Quemoy (Kinmen)
Agency
Post: Tung Lin



Pescadores
Peng-Hu-Hsien Is
- Agency -



Fukien Prov.
化 - Wa
Agency
迪 Pien

CHINA



Mobile P.O.
Chung
Parcel counter



Mobile P.O.
Chung
Agent Business counter



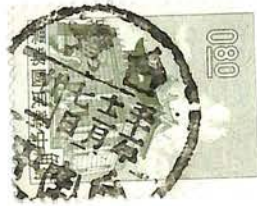
Mobile P.O.
Chung
12



12



13



Mobile P.O.
ordinary letter
section



Taipei Agency
Kiosk 4



Kiosk 3



Kiosk 1



Military
P.O.
F.P.O.



military
P.O.
Field P.O. 11
= mail counter



Military
P.O.
Bureau 2
parcel counter

CHINA

